

IoT, MessageSight and Bluemix

What, How, Why

Jeff Lowrey, IBM

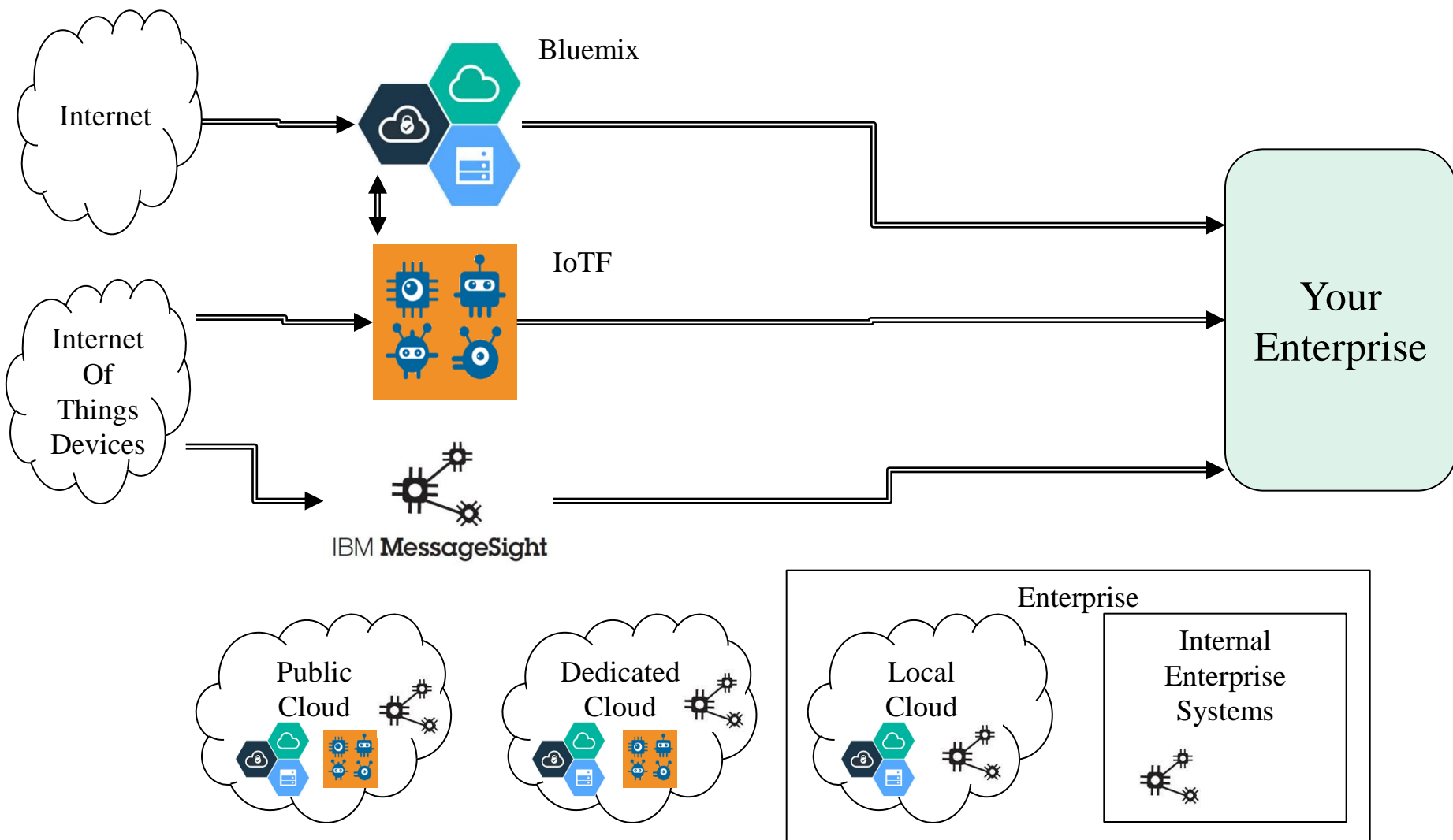
Overview

- **What is this talk, and why here at MQTC?**
- **Bluemix and what it does for your enterprise.**
- **Internet of Things Foundation (IoTF) and how it pairs with Bluemix and MessageSight for device enablement**
- **MessageSight overview and using it to integrate all of the above with MQ.**

What is this talk and why here at MQTC?

- This talk presents IBM's Bluemix, IoT services and MessageSight product.
- Why here at MQTC? These tools all connect to MQ directly through MessageSight.
- This allows you to enable many more sources of data into your existing enterprise!
- These IBM tools allow you to rapidly develop tools and services to connect to lots of internet services and resources without huge investment in time, infrastructure, or maintenance.
- Create applications that respond to real world events and ensure customers can receive real time notifications of important information.
- These tools all come with integrated analytics and a variety of hosting options – onsite, private cloud, managed cloud.
- Every tool and service is built with security in mind from the ground up.

Visual Overview



Bluemix is an integrated hybrid cloud platform

Choose the right combination of integrated development and deployment models to drive pervasive digital innovation and acceleration across apps and workloads of all types.



Public

Scale your apps with endless choice and flexibility. IBM has more than 40 cloud data centers globally and we're rolling Bluemix out across them, with Dallas, London, and several more open today.

Dedicated

An unrivaled approach to blending cloud speed and scale with enhanced security and control. Bluemix is in your own Softlayer private cloud, on that's securely connected to both the public Bluemix and your own network.

Local

Bring cloud agility to even the most sensitive workloads in your data center. Bluemix Local is delivered behind the firewall, but as a fully managed service so you can continue to focus on apps, not infrastructure.

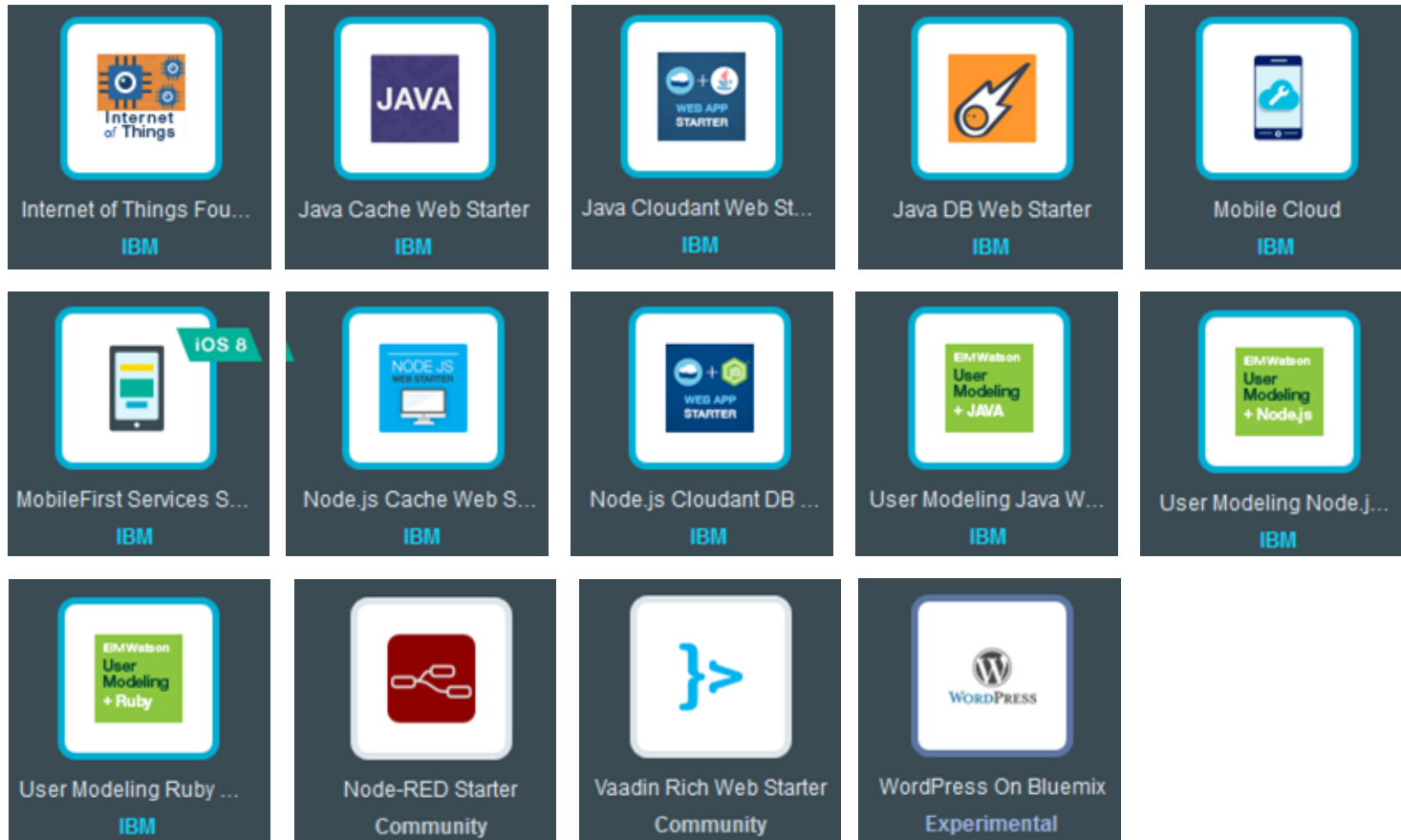
New Hybrid Cloud Provides the Path Forward



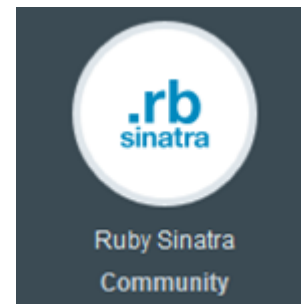
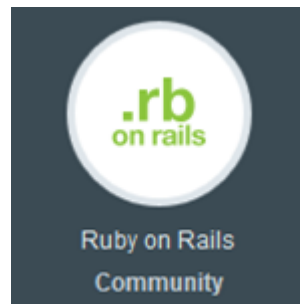
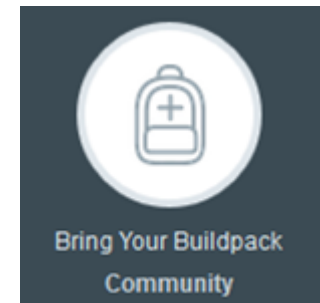
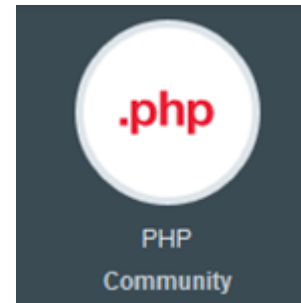
Bluemix Tools

- **Bluemix provides connectivity to resources and data through two main methods : Bluemix Services and Node-RED flows.**
- **Node-RED is IBM's JavaScript-based visual application development tool.**
- **Bluemix Services directly and simply enable use of IBM Watson, Analytics, Security and Data cloud applications.**
- **Bluemix Services provide direct and simple use of many third party applications and resources.**
- **Node-RED provides application level nodes that connect to: Twitter, Twilio, Raspberry Pi, MongoDB, MySQL, MQTT, TCP, UDP.. Lots more.**
- **Ever expanding catalog of Bluemix Services and Node-RED nodes!**

Bluemix Boilerplates make starting apps easy

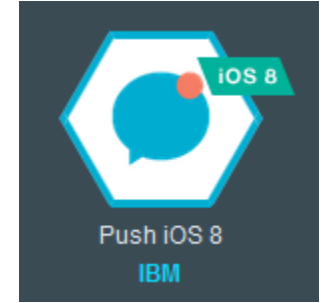
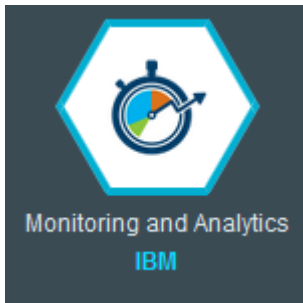
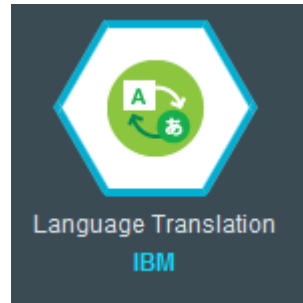


Bluemix Runtimes



Bluemix Services provide application runtime containers for custom service or application hosting – JS, Go, Java, PHP, Python, Ruby On Rails, Ruby Sinatra and Cloud Foundry community buildpacks.

Use Bluemix services to create or extend a hybrid app



Many other IBM and 3rd party Services Available

Sign up for a free trial

<http://www.ibm.com/cloud-computing/bluemix/>

Sign up for IBM Bluemix

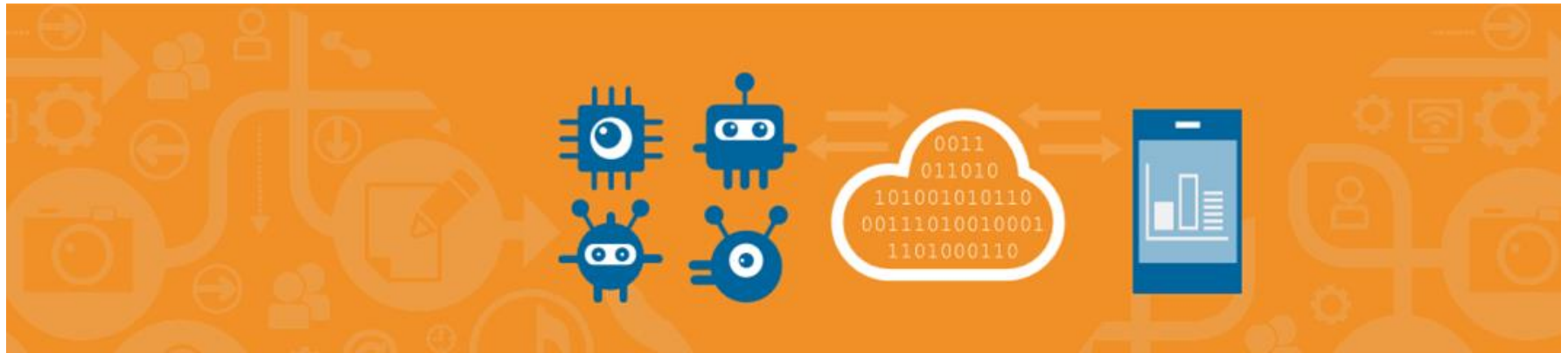
[Already have an IBM ID?](#)
Already signed up for Bluemix? [Log in](#)

First Name*	Work or School Email Address*
<input type="text"/>	<input type="text"/>
Last Name*	Password*
<input type="text"/>	<input type="password"/>
Phone Number*	Re-enter Password*
<input type="text"/>	<input type="password"/>
Company	Security Question*
<input type="text"/>	<input type="text"/>
Select your country or region. UNITED STATES	Security Answer*
<input type="text"/>	<input type="text"/>

Keep me informed of products, services, and offerings from IBM companies worldwide:
 By email By telephone

CREATE ACCOUNT

Internet of Things Foundation (IoTF)



A fully managed, cloud-hosted service that is designed to simply and derive the value from your IoT devices.

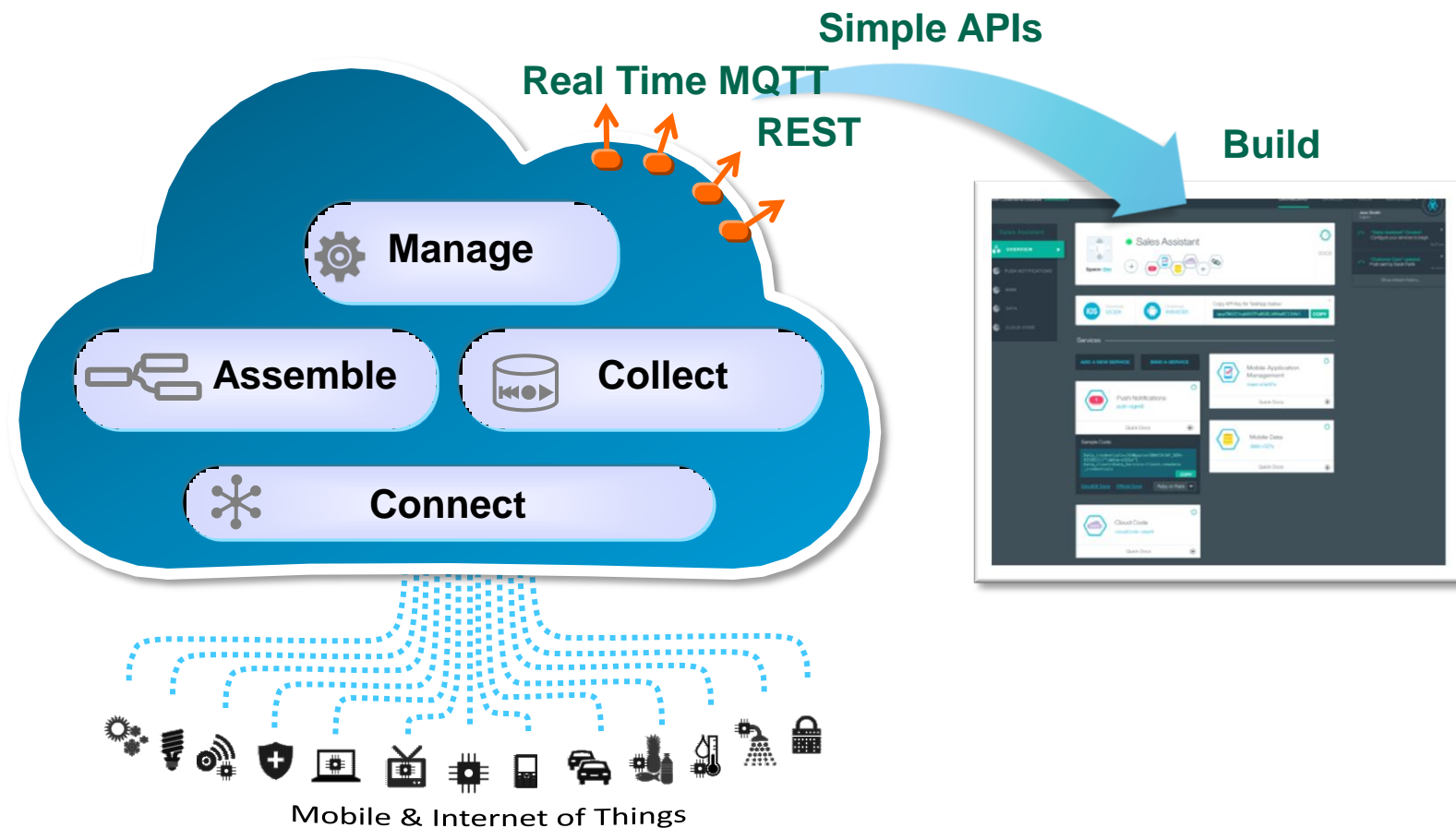
Internet of Things Foundation is available through Bluemix and the IBM Marketplace. Try it out with a free 30 day trial.

- Device registration
- Device management
- Device and application connectivity
- Securely receiving data and sending commands to devices
- Storage and access to historical data

The IBM Internet of Things Foundation

- IBM Internet Of Things Foundation is a fully managed, cloud-hosted service that makes it *simple* to derive value from Internet of Things Devices
- The Internet of Things is a widespread term for the growing network of embedded devices and other “things” that produce data and react to commands.
- IoT Devices are : Cars, Pipelines, Thermostats, Refrigerators, etc. etc.

IBM Internet of Things Foundation



IOT Use Cases have common requirements

■ Core Requirements

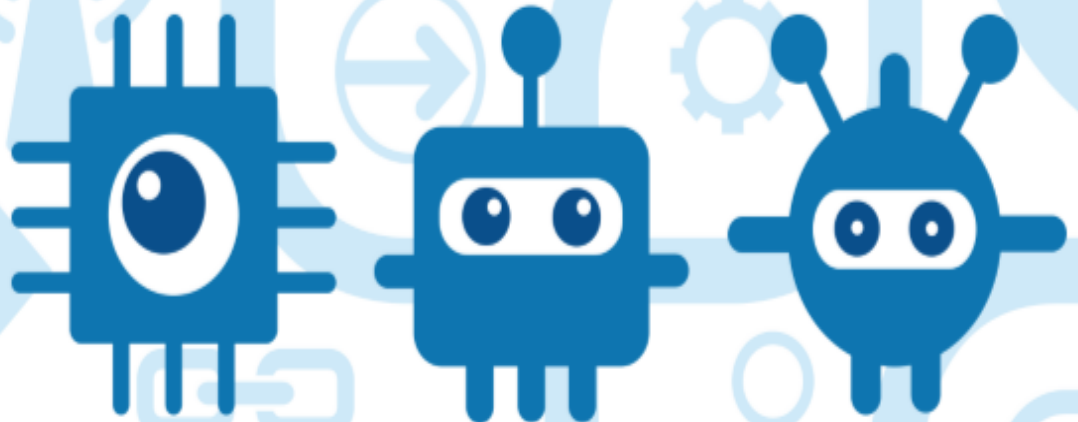
- Easily on-board connected “things”
- Create a real-time communication channel with the “thing”
- Begin capturing data from the “thing”
- Visualize the data from the “thing”
- Collect data in a historian DB
- Provide access to the collected data
- Manage the “things” and the connectivity to them
- Secure the data from the “thing” and control access to that that data
- Pay for the service based on usage

Extended Requirements

- Perform analytics both in real-time and on historical trend data
- Trigger events based on specific data conditions
- Interact with the “thing” from business apps and/or from mobile devices
- Send commands to the “thing”

Internet of Things on Bluemix

Rapidly compose and extend apps that take advantage of data and analytics from your connected devices and sensors.





Internet of Things Foundation Starter

IBM

Get started with an Internet of Things Foundation application using Node-RED in Bluemix. Try the sample flow with a simulator and customize it for your own devices.

VERSION
0.4.14

TYPE
Boilerplate

[VIEW DOCS](#)



SDK for Node.j...



Cloudant NoS...

This runtime hosts the Node-RED application that runs the flow including Internet of Things Foundation nodes. We use Node-RED so you can quickly get started with Internet of Things Foundation in Bluemix. Powered by SDK for Node.js™

[VIEW DOCS](#)

Pick a plan

Monthly prices shown are for country or region: [United Kingdom](#)

Plan	Features	Price
✓ Default	Run one or more apps free for 30 days (375 GB-hours free).	£0.0424 GBP/CB-Hour

This is a service plan for the IBM Bluemix Platform runtime.

[TERMS](#)

Create an app:

Space:

valeriel

Name:

Enter new app name

Host:

Enter host

Domain:

mybluemix.net

Selected Plans:

SDK for Node.js™

Default

Cloudant NoSQL DB

Shared

[CREATE](#)

Easily Manage And Monitor Devices

- **Fully functional and user-friendly Web Management UI.**
 - ▶ Comprehensive dashboard
 - ▶ Full set of actions for managing and diagnosing devices, managing access and monitoring usage
- **Simply yet powerful REST API for all your automation needs.**
 - ▶ All features of the WebUI
 - ▶ Bulk operations for fast registration and deletion of devices

Welcome to The Internet of Things Foundation

Hi! Welcome to the Internet of Things Foundation

Take a look at the steps below to get you going with your Internet of Things app



Connect your devices

Use our [recipes](#) to find out how to add your devices. We work with partners and have sample connection recipes for many devices.

Launch the Internet of Things Foundation dashboard and add your devices by clicking the 'Add Device' button under the 'Devices' tab.

[Launch dashboard](#)



Learn how to build your app

When you have added your devices, you can come back to Bluemix to start building your app using your real-time and historical device data.

Read the docs to find out how to make the most out of your app.

[Go to docs](#)



Learn how to extend your app

Use other Bluemix services to extend your app to start creating a great Internet of Things app.

Here are some of the services you could use:



Twilio
Third Party



Cloudant NoSQL DB
IBM



Dash DB
IBM



Geospatial Analytics
IBM



Time Series Database
IBM



IBM Analytics for Hadoop
IBM

[Find out how](#)

User Friendly and Powerful Web UI

Organization ID: nnvgkj
Bluemix Gold (go to Bluemix service)

OVERVIEW DEVICES ACCESS USAGE

Browse Diagnose Action Device Types

Device ID ↑ Device Type ↓ Date Added Location ↓

Results 1-10 of 111

Device ID	Device Type	Date Added	Location
c0000000	car	Sep 8, 2015 12:34:20 PM	
c0000002	car	Sep 8, 2015 12:34:20 PM	
c0000006	car	Sep 8, 2015 12:34:20 PM	
c0000014	car	Sep 8, 2015 12:34:20 PM	
c0000030	car	Sep 8, 2015 12:34:20 PM	
c0000062	car	Sep 8, 2015 12:34:20 PM	

Add Device

Full Featured REST API

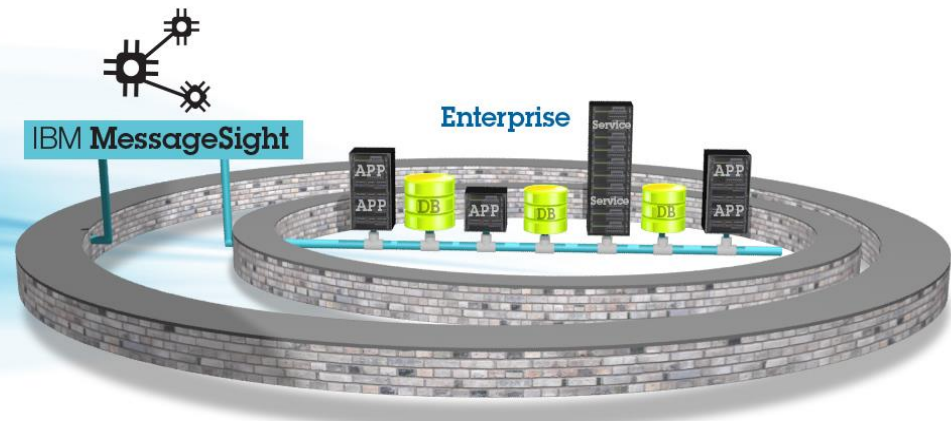
- Operations to work with : Organizations, Bulk requests, Devices, Device Types, Device Diagnostics, Problem Determination, Historical Events, Device Management Requests, User Management, Service Status
- Standard REST – HTTP operations, JSON data
- Secured by HTTPS *and* User membership in organization *and* API keys. All three are required.

IBM MessageSight

- The gateway to the Internet of Things for the enterprise
- Fast, lightweight, secure, reliable messaging for Mobile and IoT Devices



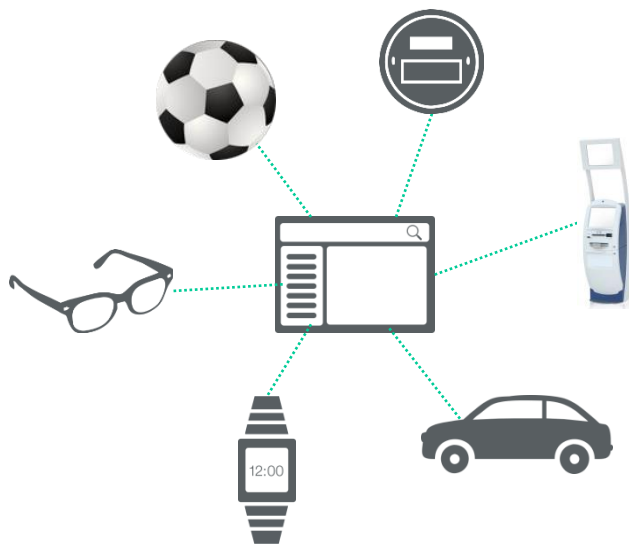
OASIS MQTT paho



Why messaging for mobile and IoT?

HTTP revolutionized how we consume data

- Simple request/response model
- Data from known source
- Available on any tablet, laptop, phone, PC
- Slow and unreliable on mobile networks



Mobile and IoT applications have additional challenges

- Requires a real-time, **event-driven** model
- Publishing information **one-to-many**
- Listening for events **as they happen**
- Sending small packets of data in **huge volumes**
- Reliably pushing data over **unreliable networks**

MessageSight in more detail

Designed for Things

- Optimized gateway for Things and Mobile devices
- Efficient open protocol
- Event-driven awareness
- Open and industry agnostic
- Fine-grained security policies

Developer Friendly

- Active dev community
- Free development edition
- Simple yet powerful APIs
- Simple messaging paradigm
- 40+ MQTT client libraries

Easy to Deploy

- Up and running < 30 minutes
- Task oriented UI guides administrator through first steps
- Simple and scalable management through policies

Easy to Integrate

- JMS
- WebSockets
- MQ
- Integration Bus
- Worklight
- InfoSphere Streams...
- Supports Oasis standard MQTT 3.11

Internet Scale

- Large numbers of concurrent connections
- High throughput
- Predictable microsecond latency under load
- Highly available

MessageSight

- **MessageSight is IBM's high performance, secure solution for MQTT communications.**
- **Enables communication from IoT devices and any other MQTT enabled applications.**
- **Acts as a reliable and manageable gateway to MQ, with simple configuration.**
- **Provides monitoring and statistics available through a Web UI and SNMP and MQTT messages.**
- **Available as a virtual machine.**

MQ Connectivity

- **MessageSight provides native connectivity to MQ, through client channels that support SSL/TLS.**
- **MQ Connectivity can provide a very granular map between MQ Topics and Queues and MessageSight topics and queues, in both directions.**
- **MessageSight Security policies can be applied to those mappings.**

Summary

- **Bluemix provides hybrid cloud and composable applications that are simple to build and access or use many kinds of data, services and resources.**
- **Internet of Things Foundation (IoTf) is a fully managed solution that provides connectivity to mobile and embedded devices and leverages Bluemix and MessageSight to process and transmit data from those devices.**
- **MessageSight is a performant MQTT server with robust security, management, and reporting services and full featured MQ Connectivity.**

Questions & Answers



Тиаикчои!